



return to **KESWICK**



...on a modern train from your station !

UPDATE NUMBER 29.

SPRING 2005

STILL ON COURSE !

At the end of November 2004, the first batch of contracts was let for sections of the Environmental Impact Assessment (EIA). When completed, these specialist studies produced will become part of the Environmental Impact Statement (EIS), which is an essential part of the application for the Transport and Works Order (TWO).

Contracts placed cover:

- ◆ Road traffic data collection
- ◆ Ecological surveys
- ◆ Archeological surveys

In the near future the following will also be covered:

- Landscape and visual impact
- Planning considerations
- Socio-economic effects
- Land ownership

Corus Railway Infrastructure Services (based at York) are managing these contracts for CKP Railways plc. The specialists being used have a combination of local connections, existing knowledge of the requirements of projects in the Lake District and Cumbria, and respected reputations.

The earlier design phase produced:

- ❖ Digital mapping of the trackbed and adjoining land
- ❖ Plans and sections of the trackbed now, and as it needs to be restored
- ❖ Scheme Description Report listing work to do on trackbed and structures
- ❖ Outline designs and virtual reality models for Keswick station and Beckses bridges

There is a huge amount of information to be compiled, but it is under control and progressing as fast as can be expected. There are no shortcuts, and the intention is to complete the task professionally.

If Lottery funding had actually been delivered (the project was deemed eligible, but the Millennium money dried up), the line could have been well established by now !

A schedule of work through to the end of 2005 is in place.

Funding, almost entirely from the sale of Bonds to the public, is still ahead of the work, but to ensure smooth progress of the whole programme, some of which must be carried out at particular times of year, now would be an excellent time for funding bodies which have been considering supporting the project to come forward with some hard cash.

CKP Railways plc and Icen Enterprises Ltd. would be delighted to publicise any new funding which underpins these specialist stages.

FLUSCO - NOT YET RESOLVED

After Eden District Council granted planning permission for the Industrial Park access road which would breach the trackbed in a damaging way at Flusco, CKP Railways made a formal complaint to Eden District Council. A response was received at the end of December. CKP Railways plc is not happy with that response and is taking the matter further.

Keswick Town Council also made a complaint to Eden District Council about being excluded from site visits. Eden District Council supplied a response which the Town Council is considering. The Keswick Reminder (newspaper) has been reporting on this saga.

Current UK Planning law allows only an applicant who has had an application turned down to make an appeal. There are however other procedures which can be followed by others to test the decisions made by local authorities. Advice and guidance has been received, and is being acted on.

One local supporter of the Project suggested "... pistols at dawn on Great Mell Fell !"

BOND APPLICATIONS STILL ARRIVING

Receipts were fewer after Christmas and New Year, which was not at all surprising !

Another batch of Bond Certificates was issued at the end of February, and the next batch is planned for the end of May 2005. Certificates are dated on, and earn interest from, the last day of the month in which the application is accepted by CKP Railways plc.

- ✓ Almost 850 Bonds have now been issued, with an average value of about £ 370.
- ✓ Of these, 166 Bonds with an average value of £ 407 have been bought by people and businesses along the route between Keswick and Penrith - a very significant show of local support !
- ✓ London and the South East accounts for 148 Bonds averaging £374.
- ✓ The North East and Yorkshire, the main source area for visitors to Keswick, has so far taken 104 Bonds at an average value of £ 388.
- ✓ Cocker mouth and west Cumbria have also been well represented - recognising the role which the new line can play to generate improvements to public transport much further afield.

Sales of books, videos, phonecards, rail tickets etc., plus the recycling of printer cartridges generates about £1,000 per annum. This is all welcome, but will be quickly used up in the later stages of the application for the Transport and Works Order. The end of the development stage is in sight.

RAILWAYS OF THE FUTURE

The Strategic Rail Authority recently undertook a consultation on the future management of parts of the National Network as 'Community Railways'. The aims include greater involvement of local authorities and the community at large, understanding the true costs of operating railways in different parts of the UK, and arriving at standards and management systems to allow local services to truly meet local needs. Currently this only involves lines on the existing National Network.

A submission to this consultation was made by Cedric Martindale, relating experience and views gained during development of the Keswick to Penrith scheme, and other projects.

Keswick to Penrith could become a model for a new generation of 'Community Railways' - a modern Railway and train service designed, built and operated to meet future local and regional needs. Ways of funding the construction have been discussed, and work continues to bring it all to life.

We look forward to your continued support !

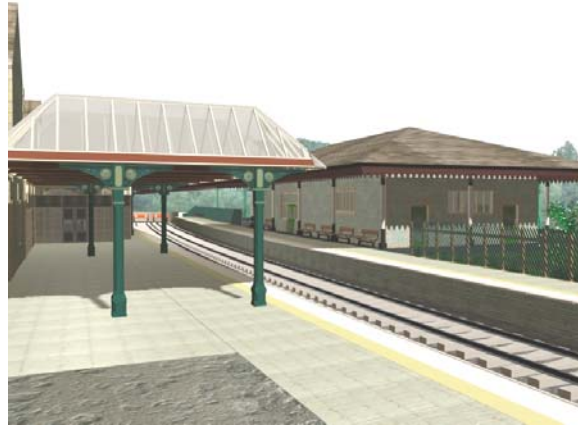
www.ckp-railways.co.uk

HOW THE NEW CKP COULD LOOK

These are some of the virtual reality (VR) images created by Corus Rail Consultancy. These suggest practical solutions are possible to development of land around the line after closure.

KESWICK STATION

A two-platform station would allow regular hourly services plus excursion and special trains. The design is aimed to serve all users, and meet the aspirations of the National Park Authority.



CROSSING THE A66 NEAR BECKSES

A possible solution on the original alignment, but carrying the new line over the road. Road safety concerns, such as unobstructed views for drivers, have been taken into account.



“THE BECKSES GAP”

The original bridges and embankments were removed by the County Council in the early 1980s.



THINKING OF APPLYING FOR BONDS ?

**CKP Railways plc Bonds, in multiples of £100, pay interest at 4% per annum gross.
Please contact the address below for a copy of the Prospectus.**

KEEPING IN TOUCH

1. If you have not already done so, please subscribe to Updates (£10 per calendar year).
25% of every subscription goes to CKP Railways plc to help fund development work.
2. If you have access to email, we can send Updates electronically - saving time, money and paper.
Please tell us if you change your e-mail address - we can not contact you otherwise !
3. Visit the website - www.ckp-railways.co.uk. This site has information about the project and its history, plus photographs of the line and surrounding countryside in all seasons.
The text of some earlier Updates is kept on this site. Latest news is also posted from time to time.
There is a linked site about the old Cockermouth, Keswick and Penrith Railway (the CK&PR).

OTHER WAYS TO SUPPORT THE PROJECT

1. The rechargeable phonecards are currently not being sold, but existing ones can still be used.
These may be re-launched in future.
2. Book your rail tickets through "Chester-le-Track" for any journey on the whole National Network, including discounted fares for Railcard holders, etc. Phone Chester-le-Track on 0191-387-1387, quote "CKP Offer" and they will pay 3% of the total sale as commission to CKP Railways plc. The total sale must be at least £25 and must be paid for by credit card.
Chester-le-Track also sells tickets "on-line" but these do NOT qualify for the CKP offer.
3. We collect and send used printer and fax ink-jet and laser cartridges for recycling.
Please contact the address below if you are interested in collecting in your area.
There are no costs and no money to handle - postage is free and packaging is supplied.
4. A professionally produced video "Trains to Keswick" records the history and people along the line. It was filmed in the last few months before closure in 1972. Buy from us at £12.99 per copy (post free) and 25% of the price goes to the reconstruction project.
5. The report "Return to Keswick - the case for a New Railway" is available at £20 per copy direct from us (post free), or order through bookshops by quoting ISBN 1-902543-02-5.
£5 from every copy sold goes into the reconstruction project.
6. For a little nostalgia, Fine Art prints and greetings cards featuring a stunning winter view of the steam hauled "Lakes Express" near Bassenthwaite Lake station, painted by Eric Bottomley of the Guild of Railway Artists, are available from us, post free.
Prints (24" x 16") are £18 each, cards (6" x 8") are £1.40 each with envelopes.
25% of the price of every order placed with us goes into the reconstruction project.
7. "CKP, only sleeping" is a CD containing hundreds of photographs of the trackbed and surrounding scenery, taken recently by Nigel Wright - who also manages the CKP website.
See for yourself how well preserved the route is, 32 years after closure.
The double CD costs £10. Each sale makes a contribution to the re-construction project.
8. "Northern Railways" is a DVD by Nigel Wright covering many parts of the north of England.
Lots of recent material from a wide variety of locations. £13.00 per copy.

Cedric A. Martindale. BSc.Hons, AUS, CEng., MIMechE, CMILT. - Director

No. 29, Feb 2005.

ICENI ENTERPRISES LTD., 1 SOLWAY PARK, CARLISLE, CUMBRIA, CA2 6TH, UNITED KINGDOM.

email: cedric@martindale.force9.co.uk

www.ckp-railways.co.uk